

**CONSISTENT
AND
DEPENDABLE
LEAD TIMES**



Traditional Style Garage Doors with Superior Insulation



ProCore

Higher density polyurethane insulation in a computer controlled continuous process provides uniform insulation, superior adhesion and excellent strength to the door panels.



EnviroSeal

Includes our Section Joint, Dual Fin Triple Contact Weather Seal and Arctic Grade Bulb Shaped Bottom Seal with a Dual Contact aluminum retainer.



Learn more at
www.prodoorsystems.com

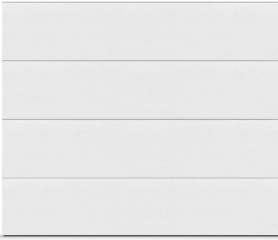


PROCORE 138
PROCORE 200

1 3/8" Thick Door
2" Thick Door

R12 R-Value
R18 R-Value

Panel Styles:



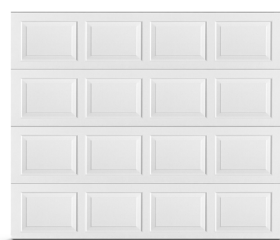
Model 7422 (1 3/8") & 8422 (2")



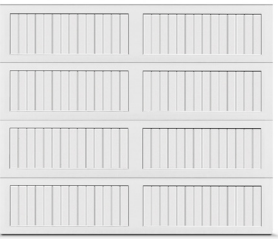
Model 7416 (1 3/8") & 8416 (2")



Model 7411 (1 3/8") & 8411 (2")



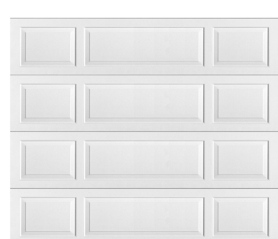
Model 7410 (1 3/8") & 8410 (2")



Model 7413 (1 3/8") & 8413 (2")

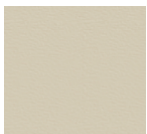


Model 7414 (1 3/8") & 8414 (2")

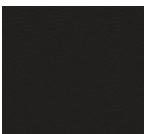


Model 8417 (not available in 1 3/8")

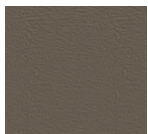
Color Options:



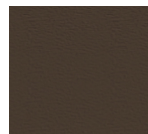
Almond



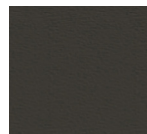
Black



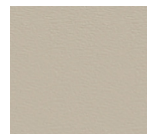
Bronze



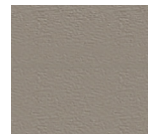
Brown



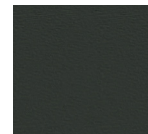
Café



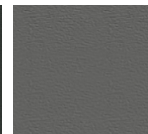
Desert Tan



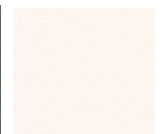
Sandstone



Iron Ore

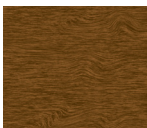


Slate Grey

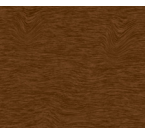


White

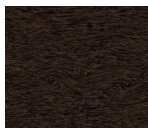
Woodgrain:



Auburn



Mocha



Walnut

Plank and Flush panels styles are available in both Woodgrain and Stucco embossing.

Mocha and Auburn are only available in Flush and Plank panel styles

Colors displayed will vary from the actual steel color. Contact ProDoor Manufacturing for color sample.